

HOW TO USE THE AUTO-INJECTOR

Pr Taro-Sumatriptan

(Sumatriptan succinate injection, BP)

CAUTIONS:

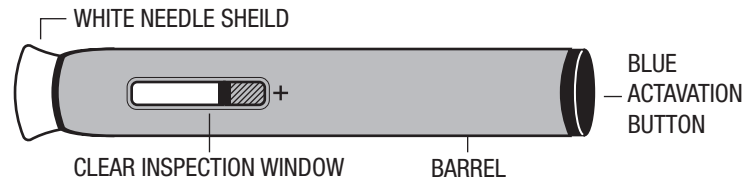
Do not remove the white needle shield from the auto-injector until you are ready to inject.

NEVER put the white needle shield back into the auto-injector.

NEVER put or press thumb, fingers, or hand over white needle cover.

Check the appearance of Taro-Sumatriptan, through the inspection window (Figure 1). It must be a clear, colorless to pale yellow solution. Do not inject the solution if it looks discolored or cloudy or contains lumps, flakes, or particles.

Figure 1



INSTRUCTIONS:

1. Wash your hands thoroughly.
2. Find a comfortable, well-lit place and put everything you need where you can reach it (auto-injector, alcohol or sterile swabs).

Identify the application area with an adequate fatty tissue layer for example on outer part of the thigh or back of the upper arm (2). Do not inject into areas where the skin is tender, bruised, red, or hard.

Wipe the injection site with alcohol or a new sterile swab and allow your skin to dry. Do not touch this area again before giving the injection.

3. Take out the auto-injector from the carton.

Pick up the auto-injector in one hand and smoothly remove the white needle shield by pulling it straight off (3). Do not twist it off, and do not recap the white needle shield, as either of these may damage the needle inside the auto-injector. The auto-injector has a cover that will protect you from needle sticks or loss of drug by accidental bumping or touching.

4. **Without** pressing the blue activation button, place the open end of the auto-injector on the injection site, straight up at a right angle (90°) and push the safety needle cover firmly against the skin to unlock (4, 4a and 4b). **Continue to hold firmly against the skin.**
5. To start the injection (5a):

- #1. Press the Blue Button (first click will sound),
- #2. Immediately release your thumb.

Note: It is recommended that you not press the blue activation button until the auto-injector is first firmly placed on the injection site with the needle cover pressed against the skin. However, if you first press and hold down the blue button, pressing the needle cover to the skin will also activate the injection (first click will sound). If this happens, immediately release your thumb after you press the needle cover to the skin.

This starts the injection. Do not lift the auto-injector off the skin. Wait until you hear the second 'click'. Once you hear the second click, lift the auto-injector straight up from the injection site. The injection is finished. The safety needle cover on the auto-injector will automatically extend to cover the needle. The needle will not be visible now.

If you did not remove your thumb from the blue button, the second 'click' cannot be heard. If this happens, slowly count to 5 before lifting the auto-injector from the injection site.

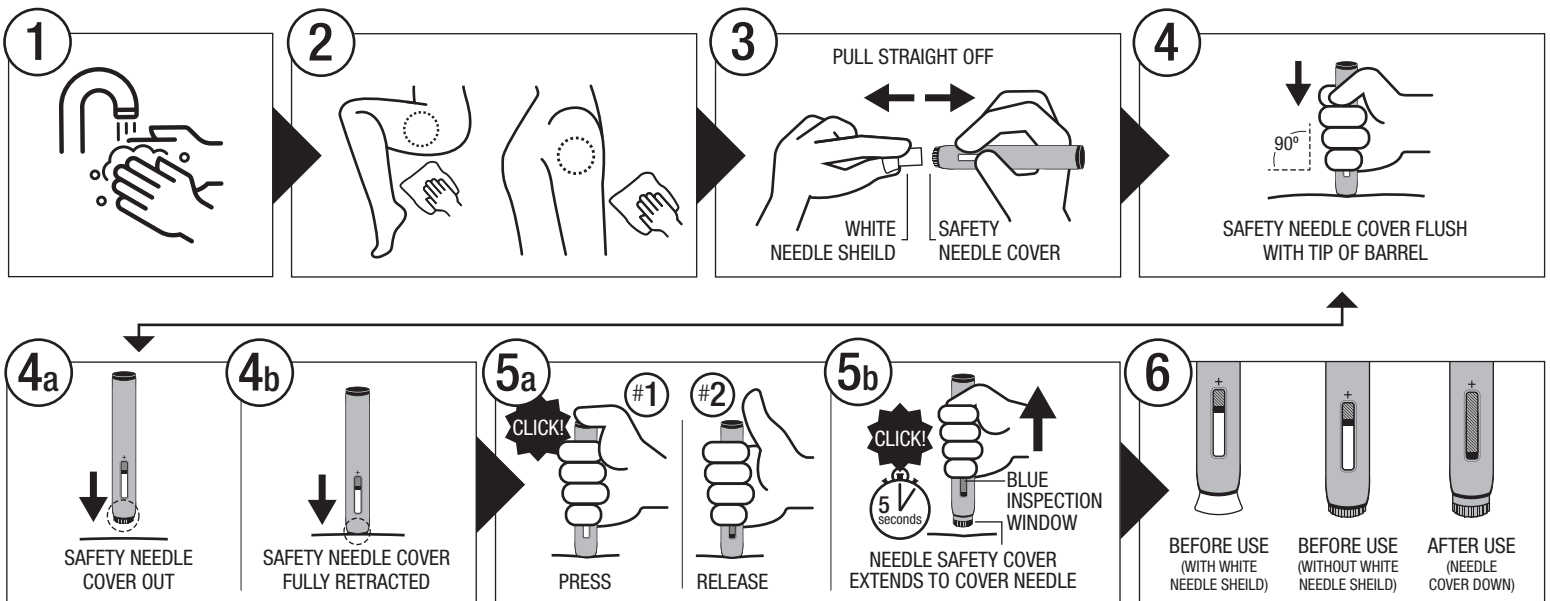
The needle safety cover will move down over the needle (5b) and lock into place. The inspection window will be blue, confirming the injection is complete. Verify that the inspection window is blue to ensure that the injection is complete before lifting the auto-injector (6). There is no need to replace the white needle shield.

If the inspection window is not blue, do not try to use the auto-injector again. NEVER ATTEMPT TO REUSE AN AUTO-INJECTOR.

If you suspect you have not received the full dose, do not repeat the injection using a new auto-injector.

If you notice a spot of blood at the injection site, dab away with a cotton ball or tissues. Do not rub the injection site. If needed, you may cover the injection site with a bandage.

Discard the auto-injector as instructed by your pharmacist. Do not discard in regular home waste.



01/07/2021



COMMITTED TO GROWTH. DEDICATED TO QUALITY.

The full product monograph is available by contacting Taro Pharmaceuticals at 1.800.268.1975 | www.taro.ca